



## THERMAL Fusion

IT'S A NEW ERA IN TACTICAL VIDEO

### Wireless CORE Monitor

Thermal Fusion technology is engineered with two video sensors: an HD 1280x720p monochrome CMOS sensor and a Longwave infrared (LWIR) thermal imager. Video from the HD camera is used to produce a blended video image of both sensors, delivering physical detail that surpasses what is available from a lone thermal imager.

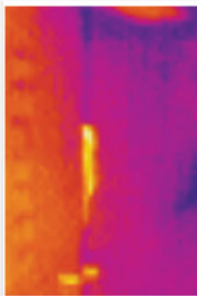
Persons and objects are clearly defined by color and outlines with **Thermal Fusion Technology**.



# THERMAL Fusion

IT'S A NEW ERA IN TACTICAL VIDEO

Available with the CORE Pole Camera and CORE Flex Camera



## Thermal Fusion

Thermal Fusion technology reveals the physical characteristics of the heat source by overlaying details onto standard thermal imagery. Clearly identifying characteristics of an immediate area allows tactical teams to avoid obstacles and detect suspects, threats, and room layouts.

Thermal Fusion / STANDARD Thermal

## STANDARD Thermal

Standard thermal imagery provides heat source imagery but lacks the clarity to identify features about the heat source. Obstacles like furniture, doors, and corners pose hazards to a tactical team. Most of these crucial features remain at room temperature and are difficult to detect with a standard thermal image.